

Setup Guide Network Camera

Indoor Use Only

Please read this document before using the product, and save this document for future reference.

Panasonic Network Camera Website:
<http://panasonic.net/pcc/ipcam/>

Model No. **BL-C210** (Wired Type)
BL-C230 (Wireless/Wired Type)

Before Reading this Document

This manual is written for both the BL-C210 (Wired Type) and BL-C230 (Wireless/Wired Type). Available features and operations vary slightly depending on the model. You can confirm the model no. of your camera by checking the model no. printed on the front of the camera.

Model number suffixes ("A", "CE", and "E") are omitted from the following model numbers shown in this document, unless necessary.
BL-C210A, BL-C210CE, BL-C210E, BL-C230A, BL-C230CE, BL-C230E

Make sure you have read the Important Information document and followed the instructions in the Installation Guide for connecting your camera.

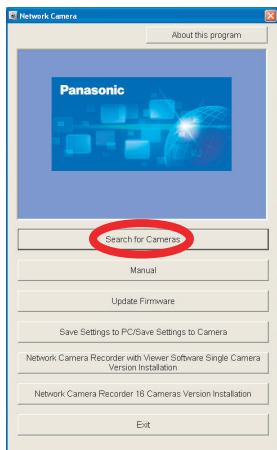
- Before following the instructions in this document:
 - Confirm that your camera is turned on and connected to your router.
 - Temporarily disable any firewall or antivirus software on your PC.
 - Close your web browser.
- Screenshots shown in this document are for reference only and may vary from what is displayed on your PC depending on the camera model, network settings, etc.

1. Insert the included CD-ROM into your PC.

- The Setup Program starts. If the program does not start, double-click Setup.exe found on the CD-ROM.

2. Click [Search for Cameras].

- The program searches for cameras connected to your network.

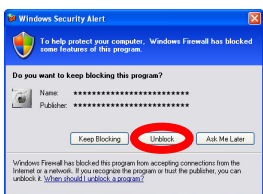


- **[About this program]:** Displays the program's version information.
- **[Search for Cameras]:** Displays a list of cameras connected to your network.
- **[Manual]:** Allows you to view the included documentation. PDF versions of the printed documentation are included on the CD-ROM; Adobe Reader® is required to view them.
- **[Update Firmware]:** Allows you to use the Setup Program to update the camera's firmware (built-in software).
- **[Save Settings to PC/Save Settings to Camera]:** Allows you to save a backup of all camera settings on your PC, or restore all settings in the camera using a backup file saved on your PC.
- **[Network Camera Recorder with Viewer Software Single Camera Version Installation] / [Network Camera Recorder 16 Cameras Version Installation]:** Installs the [Network Camera Recorder with Viewer Software Single Camera Version] / [Network Camera Recorder 16 Cameras Version] software. (See "Installing the Network Camera Recorder with Viewer Software Single Camera Version / Network Camera Recorder 16 Cameras Version" on page 2.)
- **[Exit]:** Closes the screen and exits the Setup Program.

If [Windows cannot open this file] is displayed after clicking [Manual]

[Select the program from a list]→[OK]→Check [Always use the selected program to open this kind of file]→[Browse]→Browse to [C:\WINDOWS\system32\mshta.exe]→[Open]→[OK]

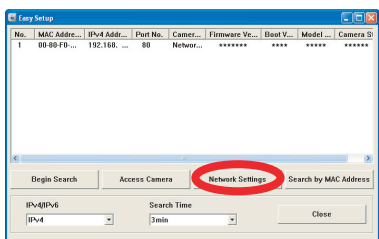
3. When the Windows Security Alert is displayed, click [Unblock].



- If the dialog is not displayed, continue to the next step.

4. For BL-C210A/BL-C230A Only: If the camera is connected to a router, follow the procedure below and set [Network Settings] to [Automatic Setup].

1. Select the desired camera and click [Network Settings].
2. In the [Network Settings] screen, select [Automatic Setup], then click [Save].
 - The camera restarts.
3. When [Camera setup completed] is displayed, click [OK].
4. Wait about one minute, then click [Begin Search].



- If you have more than one camera, you can distinguish cameras by model number, printed on the front of the camera, or by MAC address (this refers to the MAC address label on the camera).
- If more than 20 minutes have passed since the selected camera was turned on, you cannot configure the camera. Turn off the camera, then turn it on again. This restriction does not apply to cameras which have not been configured yet or have been reset to their factory default settings.

5. Select the camera you want to configure, and click [Access Camera].

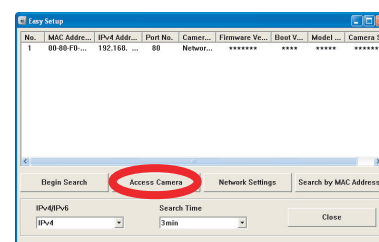
- To assign all network settings to the camera manually or to assign an IP address using the DHCP or the Automatic feature of your router, click [Network Settings], then select [Specify an IP Address], [DHCP] or [Automatic Setup] and enter the appropriate settings.

Abbreviations

- UPnP is the abbreviation for "Universal Plug and Play".
- The Network Camera is referred to as "the camera" in this document.
- The Setup CD-ROM is referred to as "the CD-ROM" in this document.

Trademarks

- Adobe and Reader are either registered trademarks or trademarks of Adobe Systems Incorporated in the United States and/or other countries.
- Microsoft, Windows, Windows Vista, Windows Server, ActiveX, and Internet Explorer are either registered trademarks or trademarks of Microsoft Corporation in the United States and/or other countries.
- Screen shots reprinted with permission from Microsoft Corporation.
- All other trademarks identified herein are the property of their respective owners.
- This software is based in part on the work of the Independent JPEG Group.

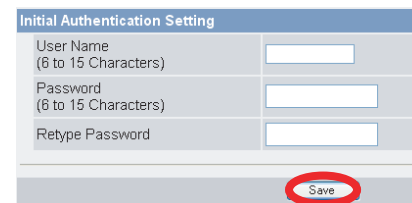


- If you have more than one camera, you can distinguish cameras by model number, printed on the front of the camera, or by MAC address (this refers to the MAC address label on the camera).
- If more than 20 minutes have passed since the selected camera was turned on, you cannot configure the camera. Turn off the camera, then turn it on again. This restriction does not apply to cameras which have not been configured yet or have been reset to their factory default settings.

- If you are using firewall or antivirus software on your PC, the Setup Program may not be able to find any cameras on your network. If you cannot disable your firewall or antivirus software, you can configure the camera by entering its MAC address (this refers to the MAC address label on the camera).

6. Enter the desired user name and password, then click [Save].

- Do not forget the user name and password you set here, otherwise you will need to reset the camera and configure it again.



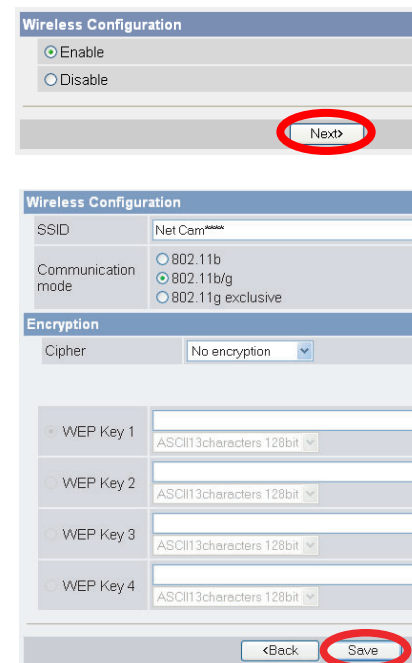
If you are using a French, German, Italian, Spanish, Russian, Simplified Chinese, or Japanese language OS, this screen will be displayed in the corresponding language, and all subsequent camera screens will be displayed in that language.

7. Enter the user name and password, then click [OK].

- When the user name and password dialog is displayed, enter the user name and password used in step 6, and then click [OK].

8. For BL-C230 Only: Click [Next] to configure the camera's wireless settings, then click [Save].

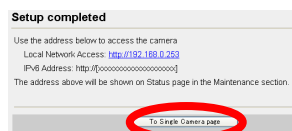
- These settings are not available for the BL-C210, continue to the next step.
- If you are not using a wireless connection, select [Disable] and then click [NEXT] to skip this step.



Access your wireless router and display its wireless settings. If your wireless router is not configured to use encryption, there is a risk of unauthorized access to your network and data. Enabling encryption is strongly recommended; WPA-PSK (TKIP) or WPA2-PSK (AES) are particularly recommended (they offer more security than WEP encryption). Note that when the router's wireless settings are changed (including encryption settings), wireless network settings for all devices that connect to the router wirelessly must also be changed. For information on changing settings, refer to the operating instructions included with your wireless router and network devices. Match the camera's wireless settings to the router's settings. For more information, refer to:

- Operating instructions included with your wireless router
- 5.3.1 Configuring the Camera for Wireless Connection (BL-C230 Only) in the Operating Instructions on the CD-ROM
- Panasonic Network Camera website http://panasonic.net/pcc/support/netwkcama/technic/wireless/cam_set.html

9. When [Setup completed] is displayed, click [To Single Camera page].

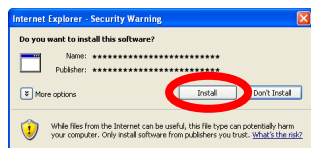


The camera's IP address is displayed. This is the IP address you must enter in your web browser to access the camera. Do not forget this address.

- If the following ActiveX® Controls dialog is displayed, click [Install ActiveX Control...].

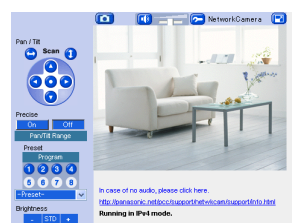


- When the following Security Warning is displayed, click [Install].



This will install the viewer program (ActiveX Controls) needed to display camera images properly. Viewer programs must be installed to view H.264 images, MPEG-4 images, MJPEG images, and to use audio features.

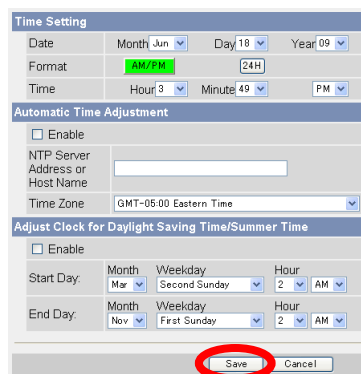
- The camera image is displayed.



Congratulations! You have successfully set up the camera and can now view camera images.

- Screen content varies by model number.

10. Click the [Setup] tab, click [Date and Time] on the left side of the screen, then set the camera's date and time. Click [Save] when finished.



For more information, refer to 5.5 Setting the Date and Time in the Operating Instructions on the CD-ROM.

- Screen content varies by model number.

Setup is complete. To configure the camera for access from the Internet, see "Access from Internet Configuration". To confirm the camera's wireless connection (BL-C230 only), see "Confirming Wireless Connection (BL-C230 Only)".

If you are finished setting up the camera, return to the Installation Guide and follow the instructions for mounting the camera.

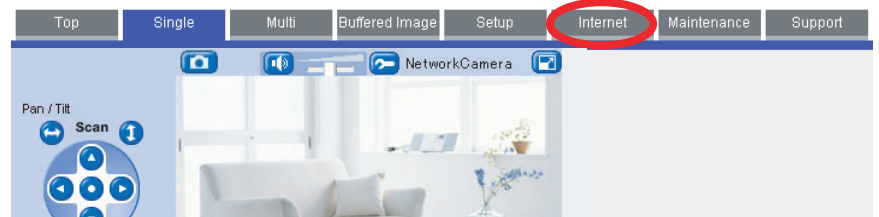
Access from Internet Configuration

To configure the camera for access from the Internet or from a mobile phone, continue with the following steps.

Note:

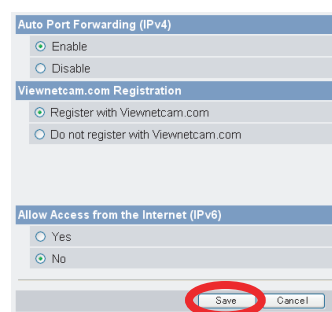
- In order to configure the camera for access over the Internet using these instructions, your router must be UPnP™ compatible and must have its UPnP™ feature turned on (it is turned off by default on most routers). For more information, refer to the operating instructions included with your router.
- To configure the camera for access over the Internet using a router that does not support UPnP™, refer to Section 4 Configuring the Camera for Access from the Internet in the Operating Instructions on the CD-ROM for general information, and refer to the operating instructions included with your router.
- Disable the maximum idle time setting on your router if you have a PPPoE or PPTP connection to your Internet Service Provider.

1. Click the [Internet] tab at the top of the camera screen.



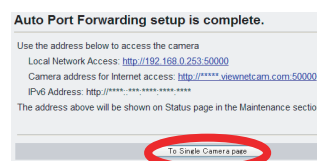
2. Select [Enable] under [Auto Port Forwarding (IPv4)], select [Register with Viewnetcam.com] under [Viewnetcam.com Registration], then click [Save].

- When the dialog about the camera's port number changing is displayed, click [OK].
- The camera and router will begin configuring themselves via UPnP™.
- If you select to register with Viewnetcam.com, click [Go to Viewnetcam.com Registration page] when it is displayed. The Viewnetcam.com website will open automatically. Follow the on-screen instructions to register.



If you are interested in accessing your camera over the Internet, we recommend using Viewnetcam.com. Viewnetcam.com is a Dynamic DNS service designed for use with Panasonic Network Cameras, and is provided free of charge. For more information about Viewnetcam.com, refer to the Viewnetcam.com website (<http://www.viewnetcam.com>) for information about this service.

3. When [Auto Port Forwarding setup is complete.] is displayed, click [To Single Camera page].



The camera's IP addresses for local (LAN) and Internet access are displayed. These are the IP addresses you must enter in your web browser to access the camera over the LAN or from the Internet. Do not forget these addresses.

- If you enabled [Auto Port Forwarding (IPv4)], the camera's port number may have changed. Do not forget the addresses displayed here.
- To confirm that the camera can be accessed from the Internet using a PC, use a PC not connected to your network and access the camera using the address displayed here.
- The IP address or URL used to access the camera over the Internet will also be displayed on the [Status] page of the [Maintenance] tab.

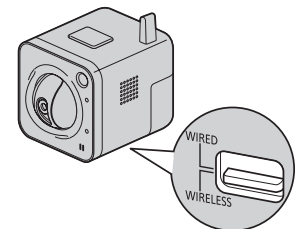
Setup is complete. To confirm the camera's wireless connection (BL-C230 only), see "Confirming Wireless Connection (BL-C230 Only)".
If you have any difficulty accessing the camera or viewing camera images, refer to the Troubleshooting Guide on the CD-ROM, otherwise return to the Installation Guide and follow the instructions for mounting the camera.

Confirming Wireless Connection (BL-C230 Only)

After configuring the camera's wireless settings, confirm that the camera can be accessed wirelessly.

1. Disconnect the LAN cable from the camera, and unplug the AC adaptor from the power outlet.

2. Set the WIRELESS/WIRED switch on the bottom of the camera to WIRELESS.



3. Plug the AC adaptor in to the power outlet.

- Confirm that the indicator lights green after 1 minute. If the indicator does not light green, see 1.2 POWER Indicator Issues in the Troubleshooting Guide on the CD-ROM.

4. Start your web browser and access the camera.

- Enter camera's IP address that was displayed during setup, then press [Enter] on the keyboard.
- If you cannot access the camera, see 1.4 Wireless Connection Issues (BL-C230 Only) in the Troubleshooting Guide on the CD-ROM.
- You may need to restart your router in order to access the camera in wireless mode.

If you are finished setting up the camera, return to the Installation Guide and follow the instructions for mounting the camera.

Installing the Network Camera Recorder with Viewer Software Single Camera Version / Network Camera Recorder 16 Cameras Version

The CD-ROM includes a single camera version of the Panasonic Network Camera Recorder with Viewer Software and a 16 cameras version of the Network Camera Recorder. Click [Manual] on the Network Camera Setup Program window for details about the installation and operation of these software.

1. Insert the included CD-ROM into your PC.

- The Setup Program starts. If the program does not start, double-click Setup.exe found on the CD-ROM.

2. Click [Network Camera Recorder with Viewer Software Single Camera Version Installation] / [Network Camera Recorder 16 Cameras Version Installation].

3. Follow the on-screen instructions to install the software.

4. When installation is complete, double-click the shortcut icon (shown below) on your desktop to start the software.



: Network Camera Recorder with Viewer Software Single Camera Version



: Network Camera Recorder 16 Cameras Version

Note:

- Network Camera Recorder with Viewer Software Single Camera Version is compatible with Microsoft® Windows Vista®, Windows® XP and Windows Server® 2003.
- Network Camera Recorder 16 Cameras Version is compatible with Microsoft® Windows® XP Professional Edition and Windows 2000 (Service Pack 2 or later).
- **Network Camera Recorder with Viewer Software Single Camera Version:** Camera registration is limited to one camera.
- **Network Camera Recorder 16 Cameras Version:** Camera registration is limited to 16 cameras.
- Supports are not provided for the single camera version and the 16 cameras version of these software.
- The single camera version and the 16 cameras version software do not support H.264 images and MPEG-4 images.